

# Bertie Paper Toy: 'Rainy Day'

by Moopf (<http://www.moopf.com/>)

You will need: a sharp knife (scissors can be used for most of the model but to cut out the face and make the slits for the arms to go in, you will need a sharp knife), glue and only a little bit of patience (it's not that difficult to construct)! Oh and a printer obviously :)

Bertie has been designed so that the inside part (page 2) can be placed inside the body in two different ways so you can have two different faces on the inside part of the model and let the person who builds the model decide which face they want to show.

Pay particular attention to the orientation of the arms, to ensure that your design works correctly when they are folded. The arms are designed so you can have a design on both the inside and outside parts.

Original toy design by moopf - contact me if you're interested in a blank template to create your own custom.



Glue tabs



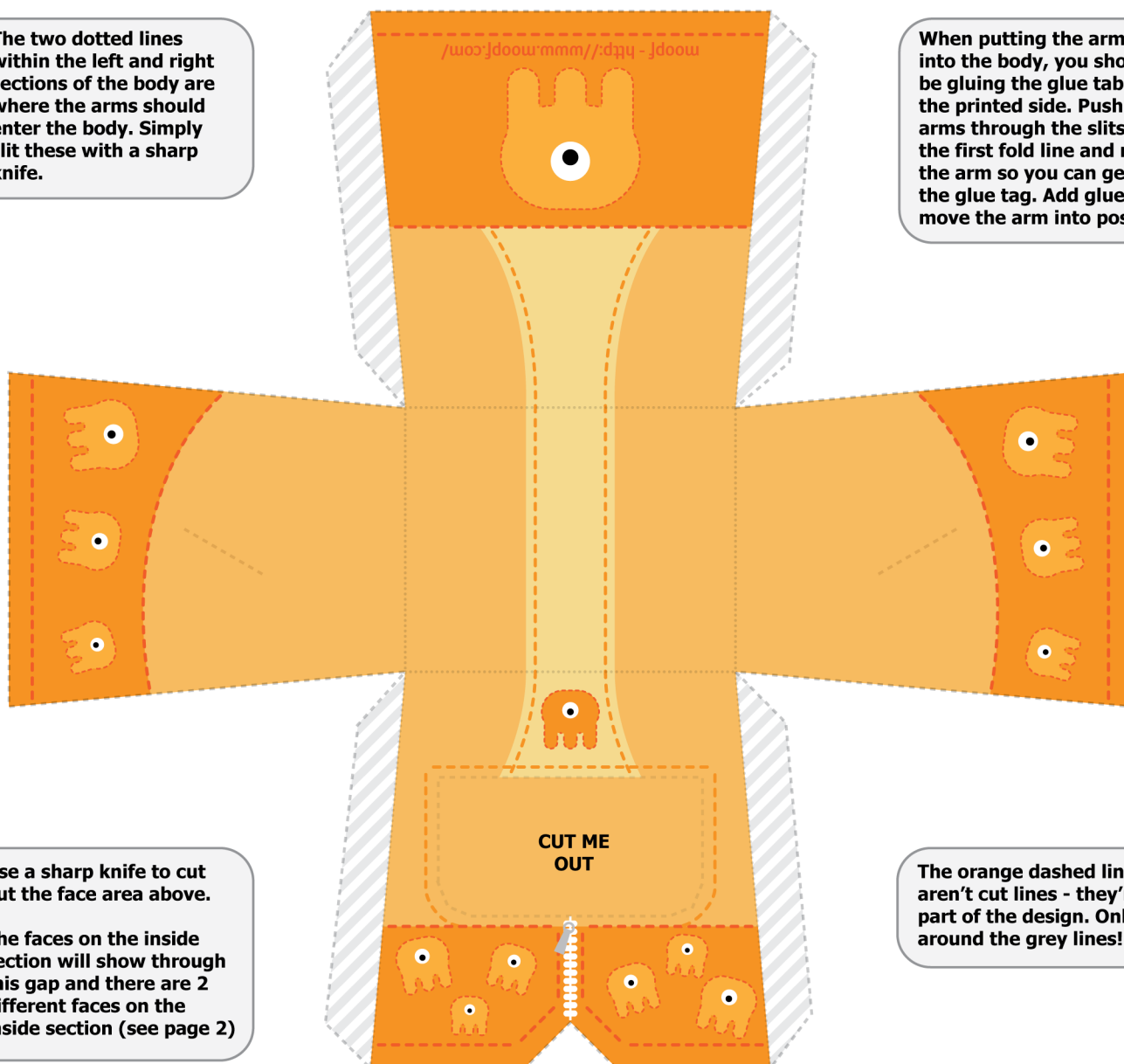
Cut lines



Fold lines

The two dotted lines within the left and right sections of the body are where the arms should enter the body. Simply slit these with a sharp knife.

When putting the arms into the body, you should be gluing the glue tab on the printed side. Push the arms through the slits to the first fold line and move the arm so you can get at the glue tag. Add glue and move the arm into position.



Use a sharp knife to cut out the face area above.

The faces on the inside section will show through this gap and there are 2 different faces on the inside section (see page 2)

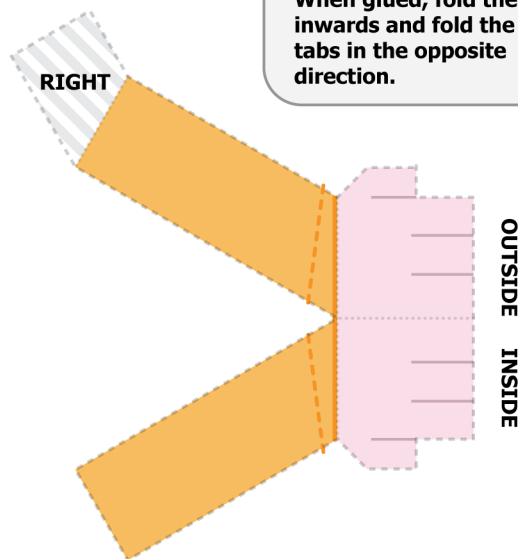
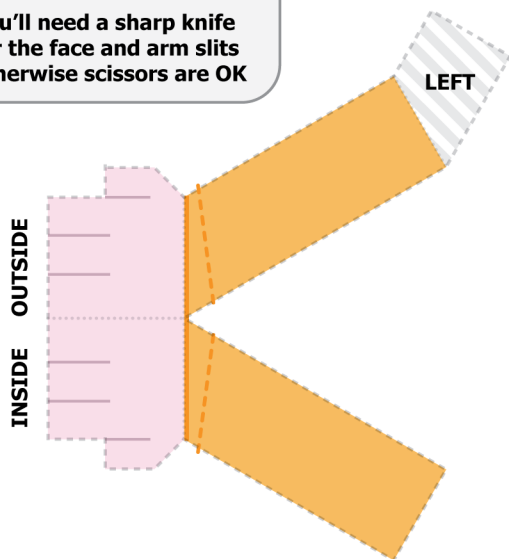
The orange dashed lines aren't cut lines - they're part of the design. Only cut around the grey lines!

When cutting the model out you can safely cut fully inside the lines and the model will fit together correctly.

You'll need a sharp knife for the face and arm slits otherwise scissors are OK

Glue the back of the inside part of the arm to the other side, folding where the hands join.

When glued, fold the hand inwards and fold the glue tabs in the opposite direction.

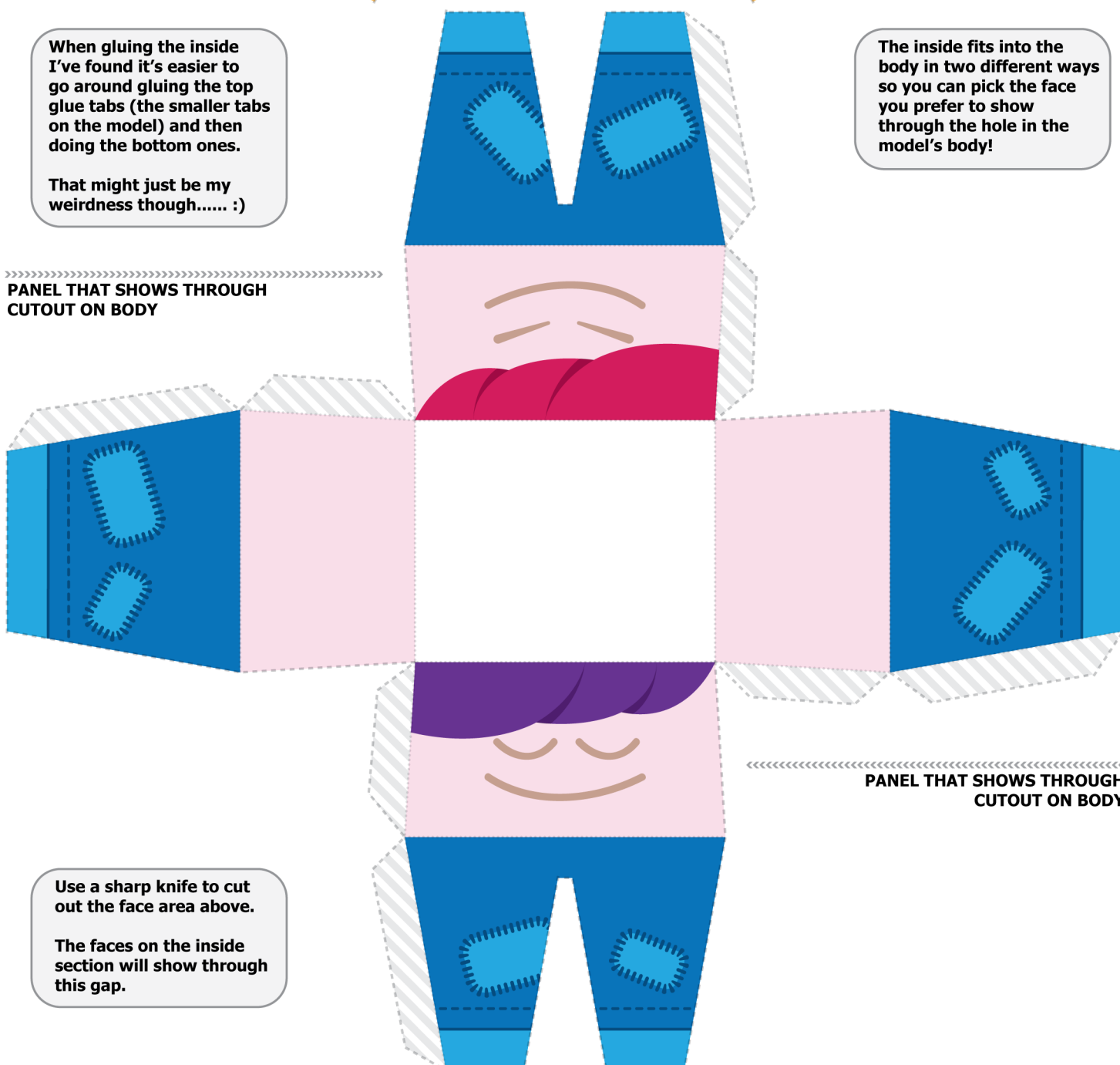


When gluing the inside I've found it's easier to go around gluing the top glue tabs (the smaller tabs on the model) and then doing the bottom ones.

That might just be my weirdness though..... :)

The inside fits into the body in two different ways so you can pick the face you prefer to show through the hole in the model's body!

Panel that shows through cutout on body



Panel that shows through cutout on body

Use a sharp knife to cut out the face area above.

The faces on the inside section will show through this gap.